

phyCORE®-i.MX 8M Mini Update & Device Management Kit

Get your Update & Device Management Kit powered up and connected in just a few simple steps.

1 | PREPARING THE HARDWARE

1. Have the included connection cables on hand: a USB-A to USB-B Micro cable, a standard Ethernet cable and the power adapter (+24 V / 3 A).
2. Connect the power adapter (+24 V DC) to the power supply connector (X33).
3. Connect the USB cable to the Debug FTDI connector (X30) and the host PC.
4. Ensure the boot mode jumpers are set to eMMC (Figure 1).
5. Turn on your power supply.

Kit Contents

phyBOARD-Polis with phyCORE-i.MX 8M Mini PB-02820-001.Ax



Power Adapter +24 V



Ethernet Cable



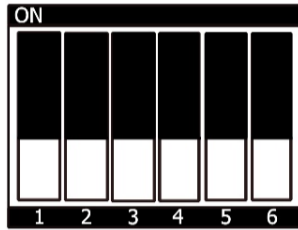
USB flash drive with Virtual Machine



USB-A to USB-B Micro Cable

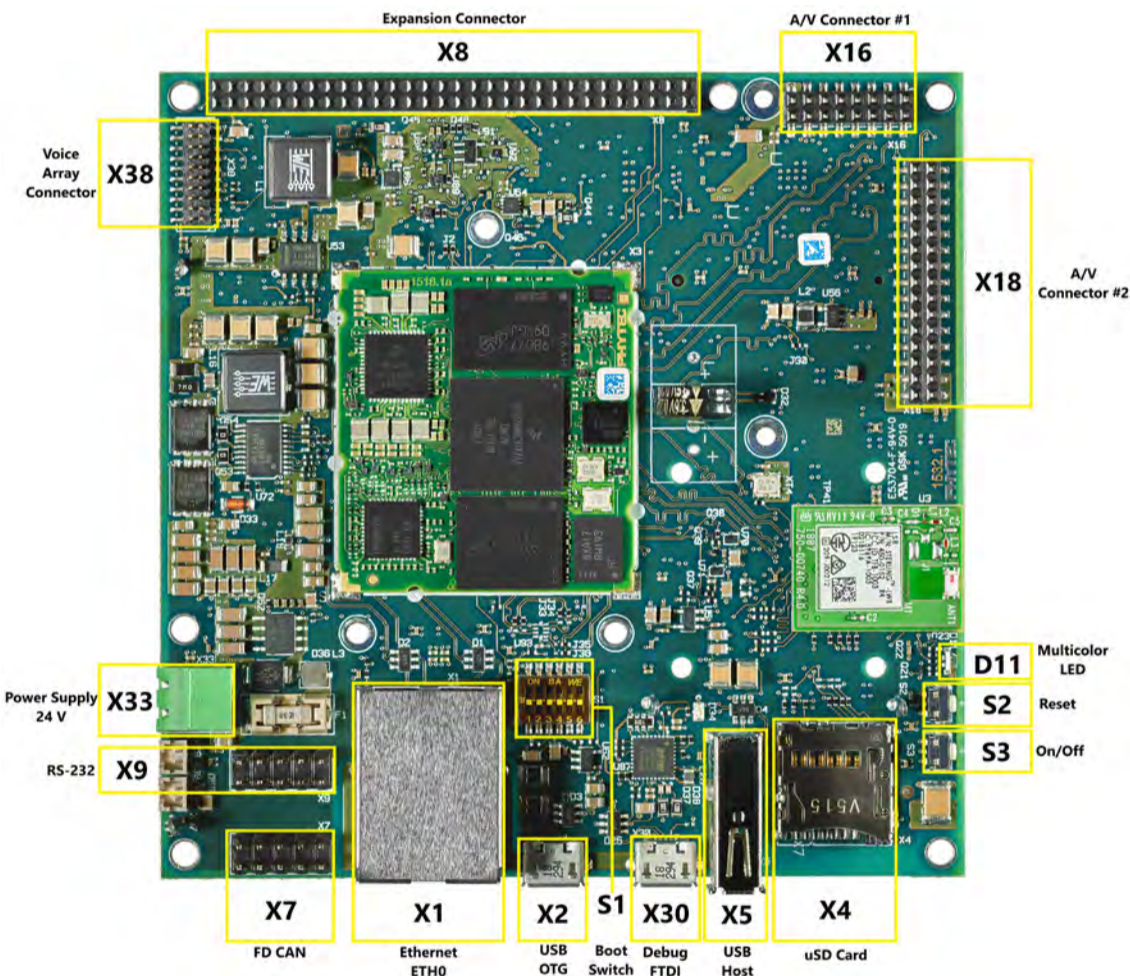


Figure 1: Boot Mode Jumpers (S1) eMMC Boot Configuration

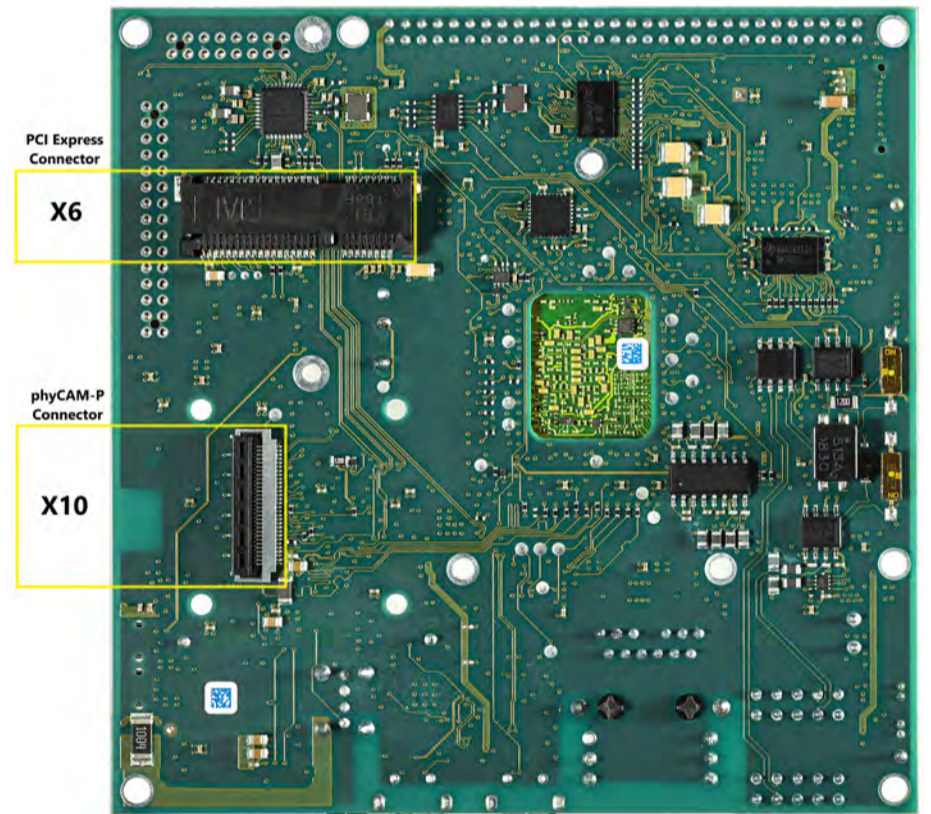


phyBOARD®-Polis with phyCORE®-i.MX 8M Mini

FRONT



BACK



PHYTEC

Germany
PHYTEC Messtechnik GmbH
D-55129 Mainz
t +49 6131 9221-32
f +49 6131 9221-33
www.phytec.de
www.phytec.eu

France
PHYTEC France SARL
F-72140 Sillé le Guillaume
t +33 2 43 29 22 33
f +33 2 43 29 22 34
www.phytec.fr

USA
PHYTEC America LLC
Bainbridge Island, WA 98110
t +1 206 780 9047
f +1 206 780 9135
www.phytec.com

India
PHYTEC Embedded Pvt. Ltd.
Bangalore
560102
t +91 80 40867046
www.phytec.in


China
PHYTEC Information Technology Co. Ltd.
Nanshan District, Shenzhen
518026 PRC
t +86 755 6180 2110
www.phytec.cn

L-1026eA0

Quick Start Guide


2 | GETTING CONNECTED

1. Plug the USB Type A connector into a free port of your host PC.
2. Plug the other end of the cable into the Micro USB Type B debug port of your phyBOARD.
3. Open a serial console application and connect to the USB Debug Port of your phyBOARD. With this, you can locally access a serial console which is needed for logging in and onboarding the board. We recommend PuTTY for Windows and minicom or tio for Linux.

 *By default every input and output is transmitted over the serial connection with a baud rate of 115200.*

3 | LOGIN

1. Find the sticker with the MAC address on your phyBOARD. This is a combination of 6 numbers printed in hexadecimal format and separated by colons, like the following example: 50:2D:F4:01:02:03
2. With the MAC address of your phyBOARD, log in using the serial console application. You should see a prompt that asks for a user and password. The default username for administrative purposes is „root“ and the password a combination of „root“ and the MAC address without the colons, e.g. „root502DF4010203“.

 *If you do not see a prompt, try hitting „Enter“ and it should appear. If it still does not appear, make sure your serial console application is configured correctly and all necessary hardware connections are established, as described before.*

4 | ONBOARDING AND REGISTRATION

1. To use your phyBOARD with the Connagative IoT Device Suite, the board must be registered first. Execute „phytec-board-config“ after logging in. This will show an interactive terminal program that guides you through the onboarding process (Figure 2). Follow the steps that are presented in this tool.
2. For a fully detailed guide on how to onboard your phyBOARD with the Connagative IoT Device Suite, see our manual for this kit: (TODO: Link to „Update & Device Management Kit with Connagative“ manual)
3. You can review the terms and conditions in the „phytec-board-config“ tool. This Update & Device Management Kit can only be fully used if you have accepted these terms and conditions.

5 | WHAT'S NEXT!

- Please login to the Connagative IoT Device Suite <https://phytec.iot-suite.io> and discover the world of Connagative and PHYTEC Secure Update and Device Management
- Connagative products and manuals: <https://osb-connagative.atlassian.net/wiki/spaces/AIDSD/overview>
- To setup your own Yocto build environment and create custom images read our detailed Development Environment Guide (<https://www.phytec.de/cdocuments/?doc=QAA5D>) as well as our Yocto Reference Manual (<https://www.phytec.de/cdocuments/?doc=NgKGEg>).
- On our German product page: (<https://www.phytec.de/produkte/system-on-modules/phycore-imx-8m-mini-nano/>) or the English product page: (www.phytec.eu/product-eu/system-on-modules/phycore-imx-8m-mini-nano-phyboard-polis-download) you will find more and the latest documentations, downloads and FAQs.
- Please feel free to contact our support team if you have any questions about getting the board up and running.

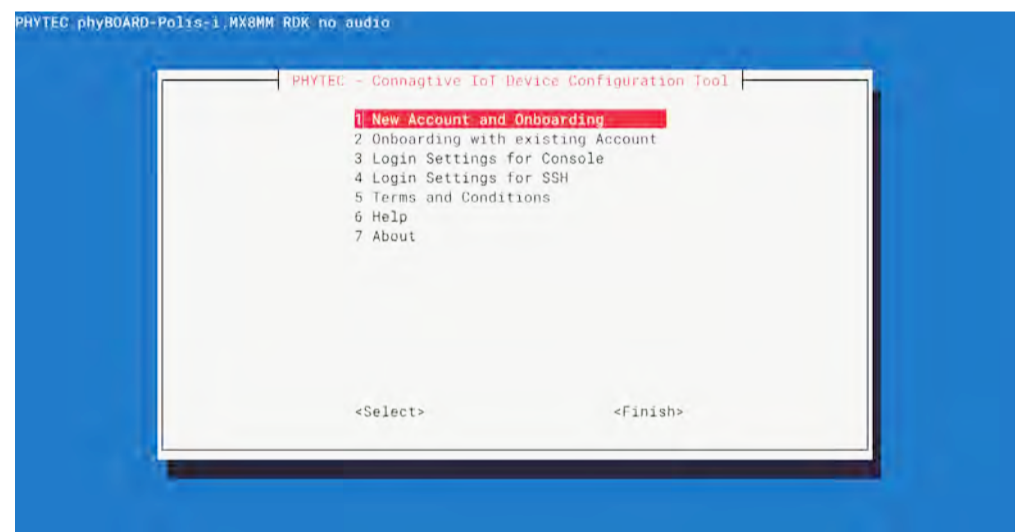


Figure 2: PHYTEC Connagative IoT Device Configuration Tool Starting Screen

