

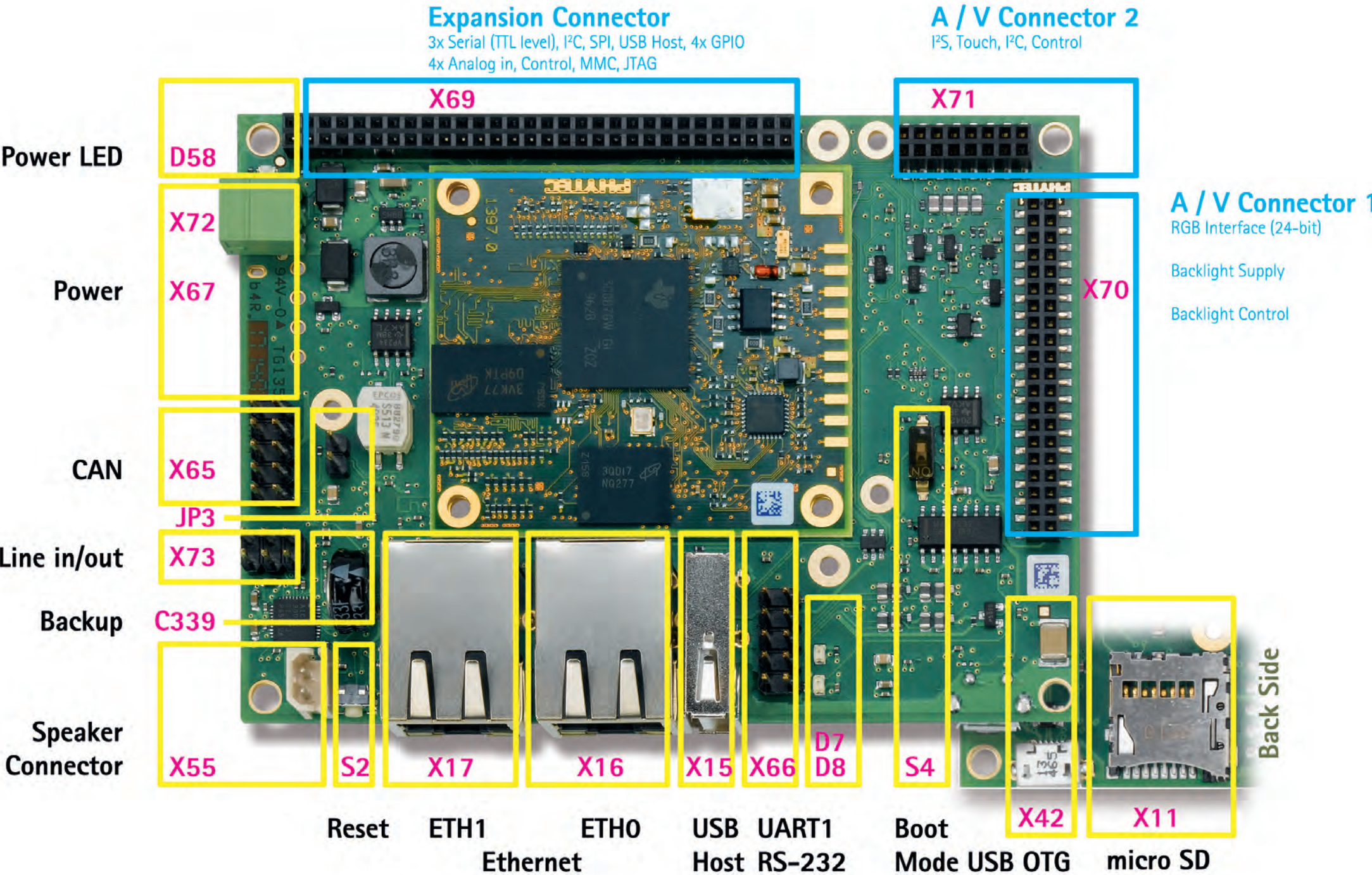
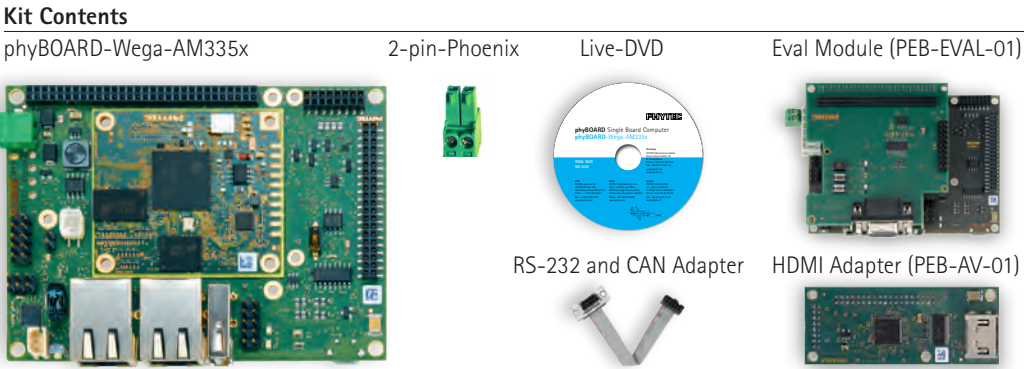
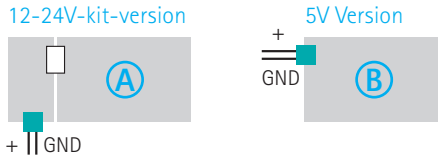
phyBOARD-Wega-AM335x

1) QuickStart Guide

Get your phyBOARD-Wega powered up and connected in just a few steps.

1. Check the kit content (see overview on the right hand side)
2. Have your connection cables at hand: You need an RS232 cable (one-to-one) and an Ethernet cross-over cable. Phytec offers an accessory kit which includes these cables.
3. Power-up phyBOARD-Wega. **For the 24V-kit-version (A):** Connect the 2-pin-Phoenix-connector (included in kit) to a 12-24V (+/-10%) DC power supply.
For the 5V-kit-version (B): Connect the 2-pin-Phoenix-connector (included in kit) to a 5V (+/-5%) DC power supply. In both cases please note the polarity of the connectors (see picture A/B)! If you have bought the optional power supply with your Kit, it comes already with the 2-pin-connector wired.
4. Turn your power supply on: Plug the 2-pin-Phoenix connector into the green jack of your Kit. The Power LED (D58) will light up.

Please note: only the 24V-kit-version comes with the power adapter board.



PHYTEC



Germany
PHYTEC Messtechnik GmbH
Robert-Koch-Straße 39
D-55129 Mainz
Phone: +49 6131 9221-32
Fax: +49 6131 9221-33
www.phytec.de
www.phytec.eu

France
PHYTEC France SARL
17, place St. Etienne
F-72140 Sillé le Guillaume
Phone: +33 2 43 29 22 33
Fax: +33 2 43 29 22 34
www.phytec.fr

USA
PHYTEC America LLC
203 Parfitt Way SW
Bainbridge Island, WA 98110
Phone: +1 206 780-9047
Fax: +1 206 780-9135
www.phytec.com

India
PHYTEC Embedded Pvt. Ltd.
#9/1C, 3rd Floor, 3rd Main,
8th Block, Kormangala,
Bangalore-560095, Karnataka
Phone: +91 8041307589
www.phytec.in

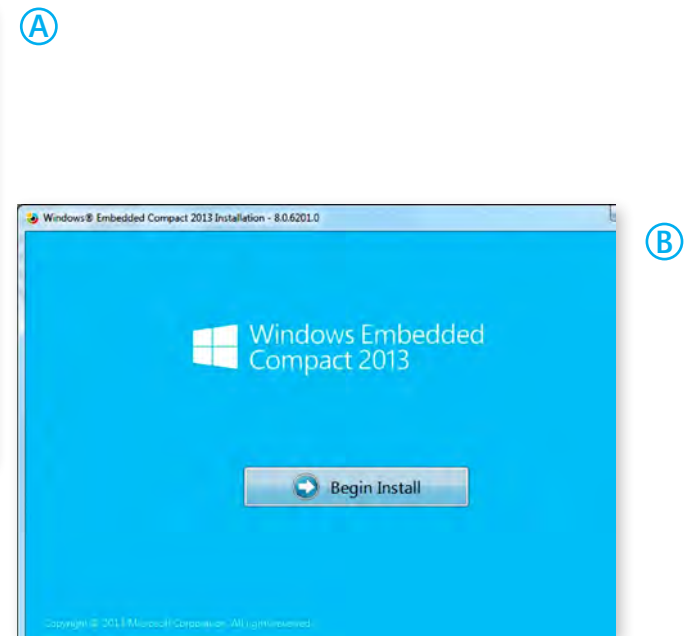
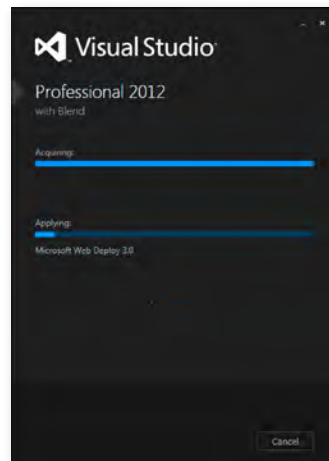
China
PHYTEC Information Technology Co. Ltd.
Suite 2611, Regus Anlian Center
Anlian Plaza, 4018 Jin Tian Road
Futian District, Shenzhen 518026
P.R. China
www.phytec.cn

L-801e

Quick Start Guide

2) Preparing your PC to start your development

1. First download the Visual Studio 2012 Trial here:
<http://www.microsoft.com/en-us/download/details.aspx?id=30682>
You may also use the Visual Studio 2013 Trial:
<http://www.microsoft.com/en-us/download/details.aspx?id=40763>
Note: The Application Guide on the DVD uses Visual Studio 2012 (A)
2. Next, download and install the Application Builder for Visual Studio:
<http://www.microsoft.com/en-us/download/details.aspx?id=38819>
Note: Choose the right Application Builder depending on which Visual Studio version you installed.
3. Finally, download and install Windows Embedded Compact 2013 (B):
<http://www.microsoft.com/windowseembedded/en-us/downloads.aspx>

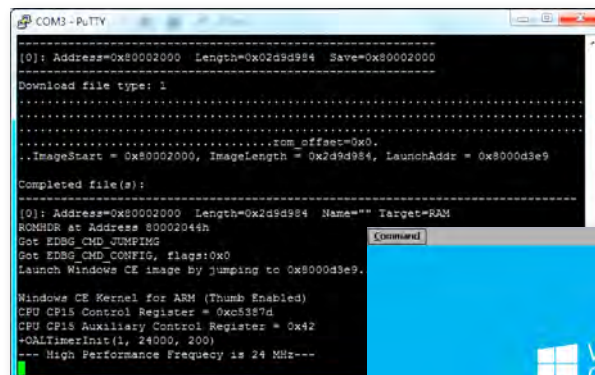


3) Getting Connected

Serial Connection

1. Connect one end of the serial cable to the DB9 connector on the Eval Module (PEB-EVAL-01).
2. Connect the other end to one serial interface of your PC (or to an USB-to-DB9-Dongle, connected to your host).
3. Open a terminal program of your choice (i.e. Putty), for a direct serial interface connection. (C)
4. Push the reset button (S2) on the Wega board (or power Wega off-and-on).

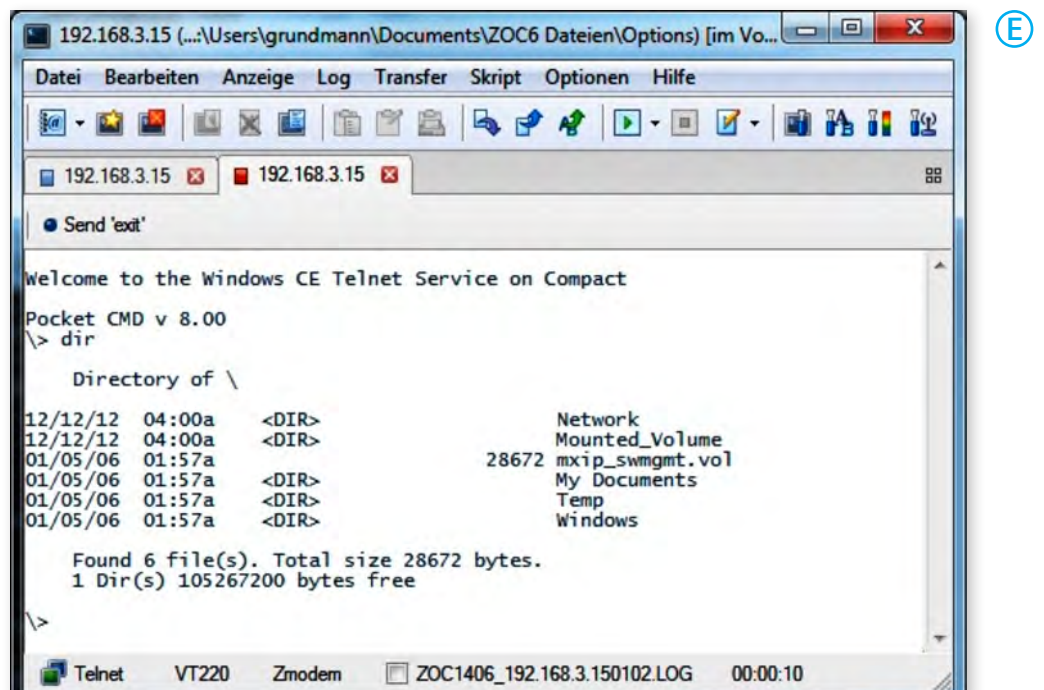
The display will show a boot message. Next, the Wega display will show the Windows Embedded Compact 2013 start screen. (D)



Ethernet Connection

We recommend disconnecting your host-PC from any other network, because a peer-to-peer connection from your PC to the Wega module will be established during the next few steps..

1. Connect your preferred Ethernet-interface on your PC with **ETH0** (X16) on the Wega module using the Ethernet-cross-over cable.
2. Configure the IP-settings on your host platform as follows:
 - DHCP disabled
 - IP address: 192.168.3.10
 - Subnet mask: 255.255.255.0
3. Open a Telnet program of your choice and enter the IP address 192.168.3.15 to establish a connection to the device. You will see the Windows CE Telnet Service Welcome screen. Type "dir" to see the file system directories of the Windows Embedded Compact 2013 device. (E)



Congratulations!

Now you are ready to review the Application Guide provided on the DVD, for developing your own Windows Embedded Compact 2013 application on phyBOARD-WEGA AM335x.

Your possible next steps

- Read our in-depth documentation provided on the DVD
- Check out the FAQ pages on the PHYTEC web (www.phytec.de/de/support/faq/faq-phyboard-wega)
- Contact our support team if you have any questions getting Wega up and running

Have fun developing your application!

