

AK-035-1

DSP Color CCD Board Camera Instruction Manual

Edition Februar 2001

In this manual are descriptions for copyrighted products which are not explicitly indicated as such. The absence of the trademark (©) symbol does not infer that a product is not protected. Additionally, registered patents and trademarks are similarly not expressly indicated in this manual

The information in this document has been carefully checked and is believed to be entirely reliable. However, PHYTEC Meßtechnik GmbH assumes no responsibility for any inaccuracies. PHYTEC Meßtechnik GmbH neither gives any guarantee nor accepts any liability whatsoever for consequential damages resulting from the use of this manual or its associated product. PHYTEC Meßtechnik GmbH reserves the right to alter the information contained herein without prior notification and accepts no responsibility for any damages which might result.

Additionally, PHYTEC Meßtechnik GmbH offers no guarantee nor accepts any liability for damages arising from the improper usage or improper installation of the hardware or software. PHYTEC Meßtechnik GmbH further reserves the right to alter the layout and/or design of the hardware without prior notification and accepts no liability for doing so.

© Copyright 2001 PHYTEC Meßtechnik GmbH, D-55129 Mainz. Rights - including those of translation, reprint, broadcast, photomechanical or similar reproduction and storage or processing in computer systems, in whole or in part - are reserved. No reproduction may occur without the express written consent from PHYTEC Meßtechnik GmbH.

	EUROPE	NORTH AMERICA
Address:	PHYTEC Technologie Holding AG Robert-Koch-Str. 39 D-55129 Mainz GERMANY	PHYTEC America LLC 255 Ericksen Avenue NE Bainbridge Island, WA 98110 USA
Ordering Information:	+49 (800) 0749832 order@phytec.de	+1 (800) 278-9913 info@phytec.com
Technical Support:	+49 (6131) 9221-31 support@phytec.de	+1 (800) 278-9913 support@phytec.com
Fax:	+49 (6131) 9221-33	+1 (206) 780-9135
Web Site:	http://www.phytec.de	http://www.phytec.com

2nd Edition: February 2001

1 Features:

- Board Size 32x32mm + 42x42mm Stack
- 1/3" CCD Color DSP Camera
- High Sensitivity (0,25Lux at Max Gain +48dB)
- Y/C output as standard
- 3 types of External sync. selectable
- Digital Zooming available (Stand. 4x)
- Various mode setting available by Jumper Land
- RS-232C control available through R/C unit

external parameter control (optional):

In delivery condition the camera in automatik mode. It is not external control necessary.

A separate connector (the cable is not provided with the camera, order nr.: WK 031) control the camera parameters via an RS232 and PC. The PC-software (Win9x/Win2000/WinNT, is included with the cable) loads the settings up to the camera. The settings can be stored permanently in the camera. The description of camera parameters are in the software manual of control program.

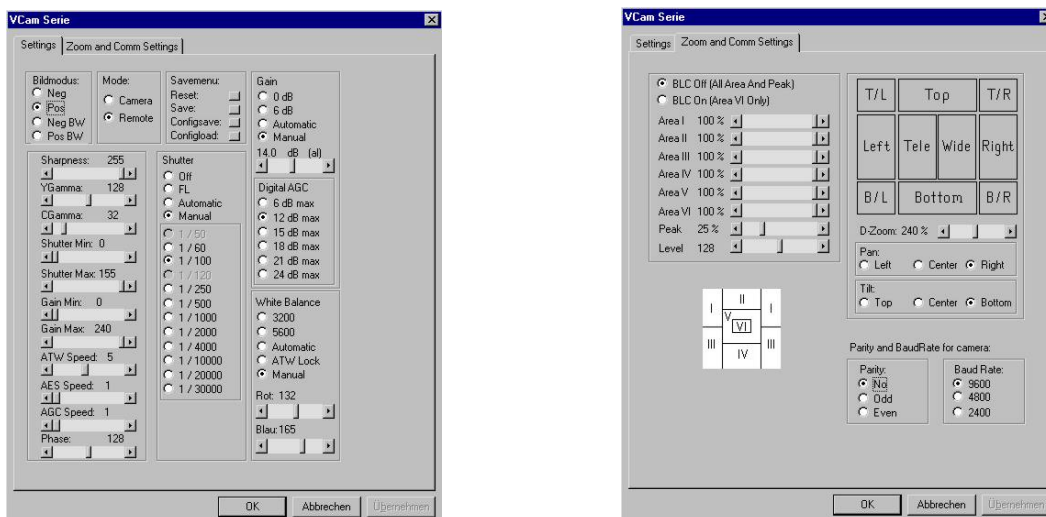
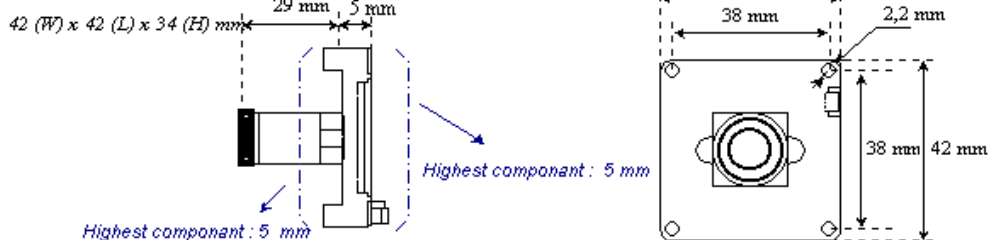


Figure 1: controlprogram for VCAM-1-series

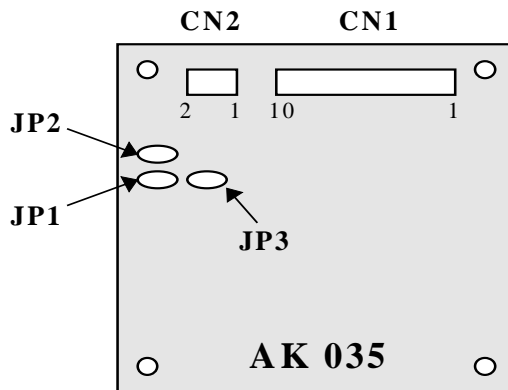
2 Specifications (Factory setting mentioned in Gothic letter):

Image sensor	: 1/3" color CCD sensor (Sony ICX-059CK)
TV signal system	: PAL
Effective pixels	: 752 (H) x 582 (V)
Video Output	: VBS (1Vpp, 75 Ohm), Y/C separate
Scanning System	: 2 : 1 Interlace
Synchronization	: Internal / External
External Sync.	: VS/VBS or Sync. or HD/VD or Line Lock
Horizontal resolution	: 450 TV lines or greater at Y-signal
Gamma correction	: 0.45
Min. Illumination	: Standard 0.5 Lux (at AGC=ON +39dB, F1.4) : Minimum 0.25 Lux (at AGC=ON +48dB, F1.4)
S/N ratio	: 50 dB or more (AGC= OFF)
AGC	: 39 dB Max. (Analog 24dB + Digital 15dB) : Selectable 8 modes by Jumper (Max. +48 dB)
Electronic Iris/Shutter	: E. Iris ON:1/50-1/30,000sec. , FL:1/120sec., : OFF:1/50sec., shutter speed settable by Jumper
White Balance	: ATW ON (2600°K-9000°K) / OFF / selectable
BLC	: OFF / ON (Center) selectable
Temperatures	: 0 to +40 deg.C (-5 to +50 deg.C at working)
Storage-Temperatures	: -25 to +60 deg.C
Standard Built-in Lens	: Fixfocus f=5.6mm F3.0
Dimensions	: 42(W) x 42(L) x 34(H) mm
Weigh	: Approx. 35 g (with f=5.6mm lens)

Dimensions :



3 Connector Pin Assignment



CN 5:

1.	white	Y output
2.	white	C output
3.	yellow	IRIS output
4.	blue	SYNC / HD input (Ext. Sync)
5.	black	GND
6.	blue	Ext.-VD input (Ext. Sync)
7.	black	GND
8.	white	VIDEO (FBAS) output
9.	black	GND (DC)
10.	red	POWER input (DC +12V)

CN 7:

1.	GND
2.	Remote (RS-232)

Jumper-land Setting

	Function	Open factory set	22kOhm	short
JP 1	AGC/Gain	ON / +39dB	OFF	ON / +24dB
JP 2	Shutter	ON elec. Iris	OFF 1/120s fixed	ON 1/50s fixed
JP 3	WB/BLC	ATW ON BLC OFF	ATW LOCK	ATW ON BLC ON
JP 4	Dig. Zoom	Stop	Tele side	Wide side

More adjustments are possible with resistors combinations in jumper land (OEM).

The connector **CN2** in front of the camera, is used for DC-controlled IRIS (OEM).

Document: AK-035-1
Document number: L-350e_2, February 2001

How would you improve this manual?

Did you find any mistakes in this manual? _____ page

Submitted by:

Customer number: _____

Name: _____

Company: _____

Address: _____

Return to:

PHYTEC Technologie Holding AG
Postfach 100403
D-55135 Mainz, Germany
Fax : +49 (6131) 9221-33

Published by

PHYTEC

© PHYTEC Meßtechnik GmbH 2001

Ordering No. L-350e_2
Printed in Germany